

# 我要—PASS



質 量 更 高      務 服 更 好

一年免費升級服務

<http://www.51-pass.com>

**Exam** : **9L0-409**

**Title** : **Mac Integration Basics 10.9  
Exam**

**Version** : **Demo**

1.Review the screenshot then answer the question below.



You try to open an application called Dead End, but you get the alert shown above. You know the application comes from a trusted source.

How can you open the Dead End application?

- A. Option-click the application.
- B. Open Security & Privacy preferences, click the Gatekeeper tab, click the Add (+) button beneath the Developers list, and enter Houdini.
- C. Control-click the application, choose Open from the shortcut menu, then click Open in the dialog that appears.
- D. Open Security & Privacy preferences, click the Gatekeeper tab, click the Add (+) button beneath the Authorized Applications list, and enter Dead End.

**Answer:** D

**Explanation:**

Reference: <http://support.apple.com/kb/HT5290>

2.SMB is also called \_\_\_\_\_.

- A. AFP
- B. VNC
- C. VPN
- D. CIFS

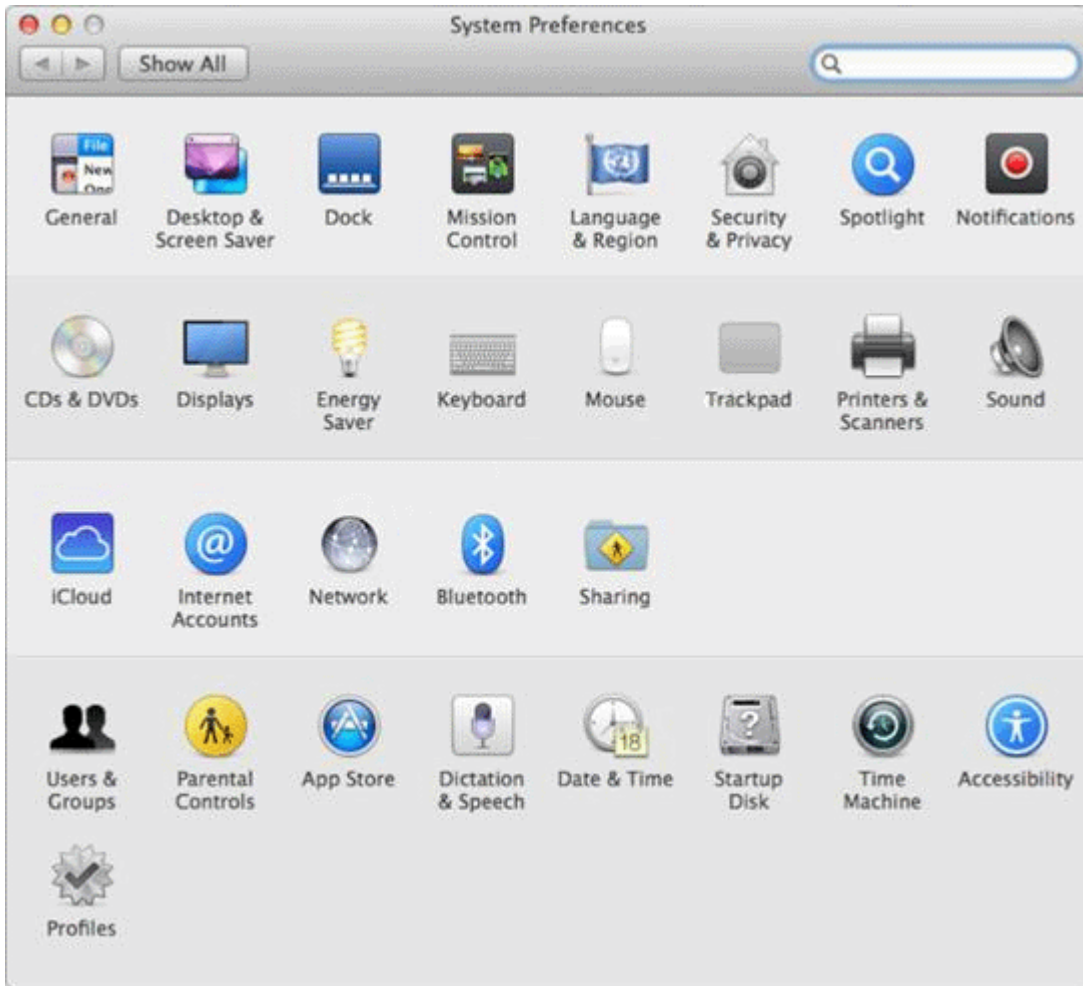
**Answer:** D

**Explanation:**

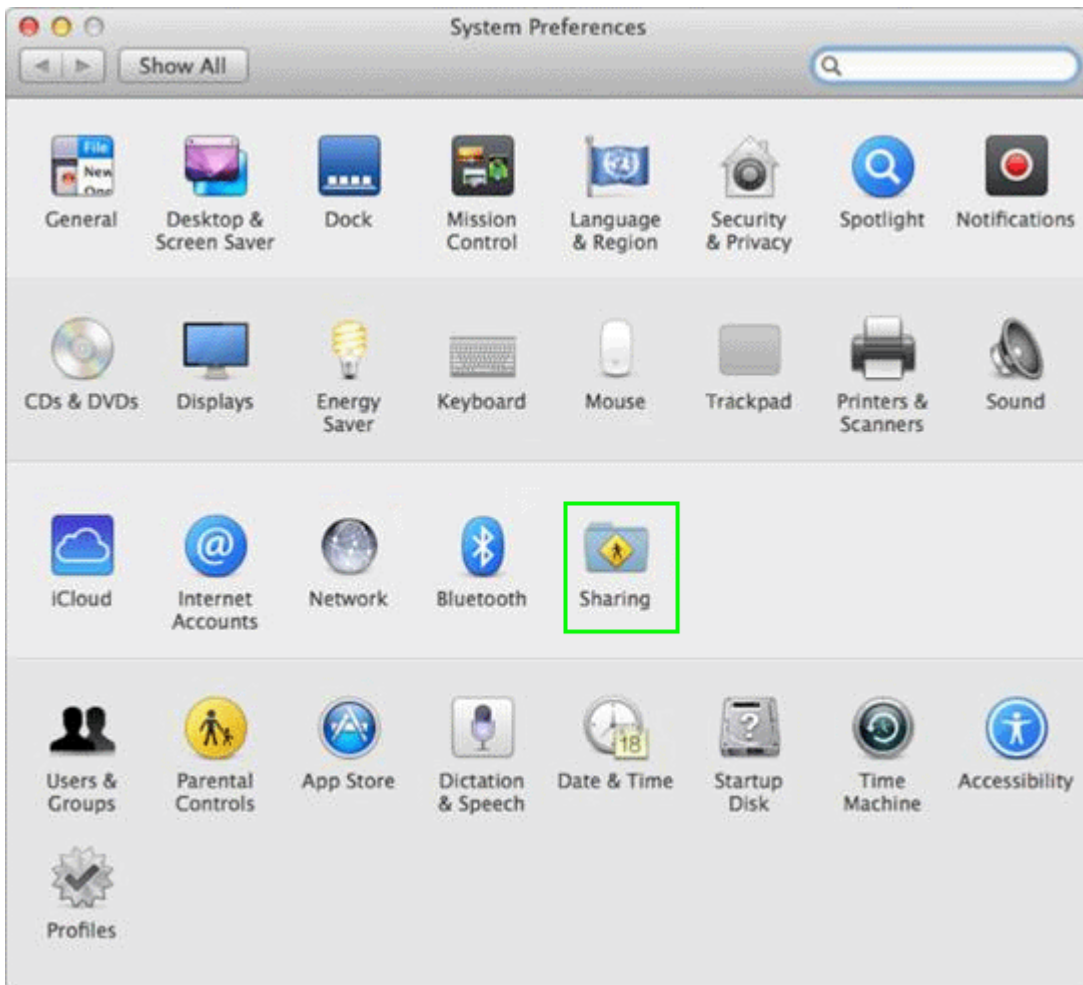
Reference: [http://en.wikipedia.org/wiki/Server\\_Message\\_Block](http://en.wikipedia.org/wiki/Server_Message_Block)

3.HOTSPOT

In the screenshot, click the icon of the preference pane where you configure your Mac so that Windows users can access files on your Mac over the network.



**Answer:**



**Explanation:**

Reference: <http://support.apple.com/kb/HT1549>

4. In OS X, the "Connect to Server" command in the Finder supports which TWO of these network file protocols?

- A. P2PP
- B. ADC
- C. AFP
- D. NCP
- E. FTP

**Answer:** C,E

**Explanation:**

Reference: <http://www.macworld.com/article/2012153/eight-ways-to-connect-to-a-server.html>

5. Which protocol CANNOT be used to print from a Mac with OS X Mavericks to a network printer?

- A. AppleTalk
- B. LPD
- C. SMB
- D. IPP
- E. HPJetDirect

**Answer: A**